

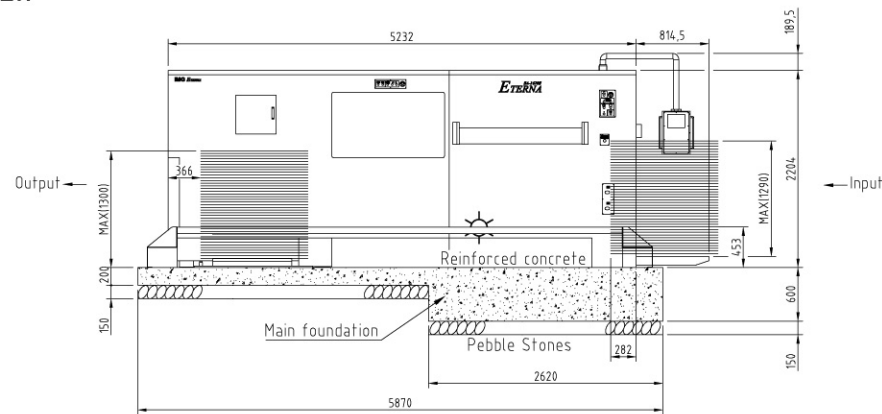
SA-1620S

Specifications

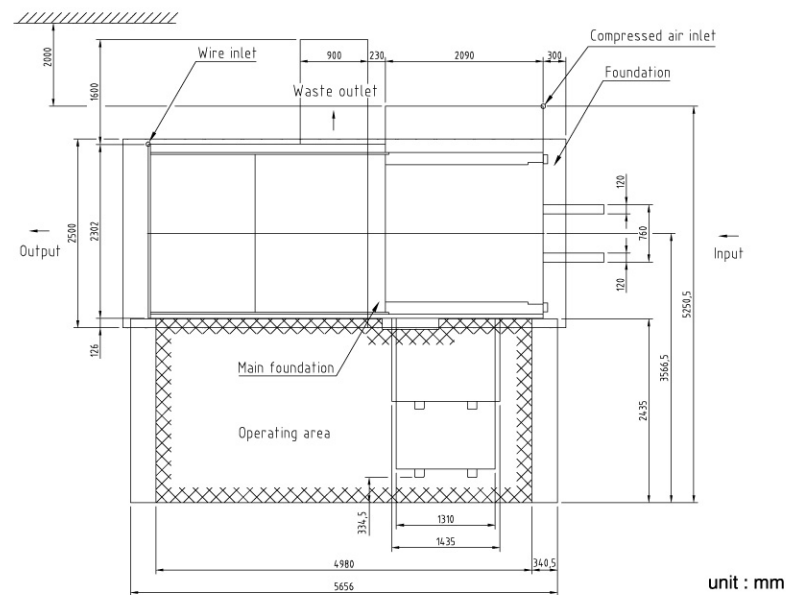
| | | | |
|---------------------|--|-----------------------|--------------------------------|
| Max. Sheet Size | 1620 × 1200 mm | Max. Mechanical Speed | 3000 cycles/hour |
| Min. Sheet Size | 650 × 450 mm | Max. Cutting Pressure | 400 tons |
| Max. Cutting Size | 1600 × 1180 mm | Total Power Required | 25kw |
| Inner Chase Size | 1630 × 1210 mm | Main Motor Power | 18.5kw |
| Stock Range | E, B, C, A and AB flute corrugated board | Net Weight of Machine | 25 tons |
| Min. Gripper Waste | 15mm | Machine Dimensions | 6280(L) × 5250(W) × 2400(H) mm |
| Cutting Rule Height | 23.8mm | | |

In the interest of product improvement, the manufacturer reserves its right to change specifications and features without notice.

SA-1620S FLOOR PLAN-SIDE VIEW



SA-1620S FLOOR PLAN-TOP VIEW



Shanghai Eterna Machinery Co.,Ltd.

Shanghai Plant:
No.1125 Taishun Road, Anting Town,
Jiading District, Shanghai 201814 China
Tel: +86-21-59502451 59502481-2487
Fax: +86-21-59502477
E-mail: sales@eterna-shanghai.com

Shanghai Office:
T1/13AB, Gateway Plaza, No.2601 Xietu Road,
Shanghai 200030 China
Tel: +86-21-64262538
Fax: +86-21-64262153
E-mail: export@eterna-shanghai.com

Agent



SEMI-AUTOMATIC DIECUTTING & CREASING MACHINE WITH STRIPPING STATION

SA-1620S



SHANGHAI ETERNAL MACHINERY CO.,LTD.

SA-1620S



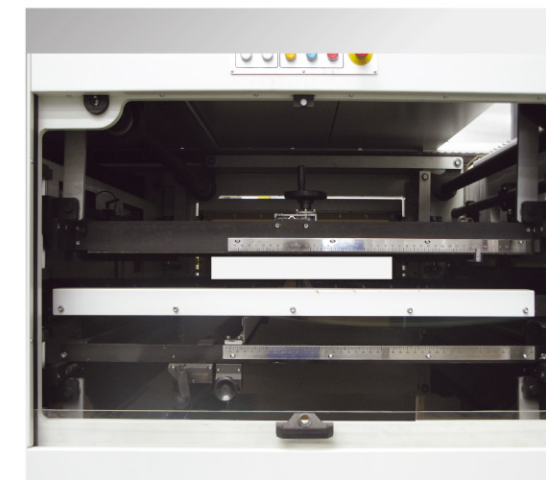
HAND FEED SECTION

- Simple and effective feeding system, short set up time hence higher efficiency and productivity.
- Fork Type Lifting table build with side guide for centering position.
- Automatic Feeder Lifting to maintain pile height for manually sheet feeding.



DIECUTTING SECTION

- Safety door and diechase safety locking system to ensure safe operation.
- Complete lost sheet control throughout the entire machine.
- Center line system for quick change of die and short set up time.



STRIPPING SECTION

- Heavy duty double action stripping system to ensure positive stripping.
- Center line system for quick stripping die set up.
- Motorized upper frame suspending hoister.

*Semi-Automatic Diecutting & Creasing Machine
With Stripping Station*



ELECTRICAL CONTROL

- Top quality electrical components with latest PLC control technology to ensure trouble free running.



HIGH PILE DELIVERY SECTION

- Automatic high pile delivery system.
- Back damper, Front and Side joggers to ensure neat stacking.
- Air cylinder chain tensioner and chain safety protection limit switch.