

ETERNA always puts quality first during the development. Each product goes through rigorous and meticulous tests. Attention from every tiny detail, every production process, every technology procedure, even the small aspect of product management, is taken very seriously. Because we always uphold the philosophy of manufacturing the highest quality products for our customers.

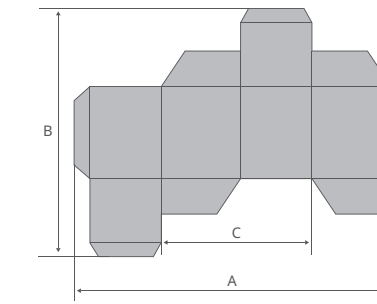
**Eterna is committed to creating folder gluers with the highest quality standards.**

Address:  
1125 Taishun Road, Anting Town, Jiading District, Shanghai, China  
+86-21-6426 2538  
export@eterna-group.com  
www.eterna-group.com

Specifications			
<b>Stock Range</b>			
Card board	250-1200 GSM		
Corrugated board	E - AB Flute		
<b>Power System</b>			
Max. Belt Speed	260 m/min		
Jogging Speed	20 m/min		
Total Power Required	75 kva		
Max. Air Requirement	0.7 m <sup>3</sup> /min		
<b>Machine Dimensions</b>			
	<b>1700</b>	<b>2100</b>	<b>3200</b>
Machine Dimensions	23.1 × 2.9 m	23.1 × 3.3 m	23.1 × 4.4 m
Weight	25 Ton	30.5 Ton	35 Ton

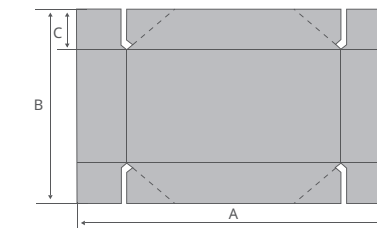
\*In the interests of product improvement, the manufacturer reserves its rights to change specifications and features without notice.

**BOX SIZES**



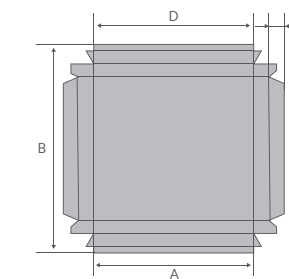
Straight-line boxes (Standard folding section) Unit: mm (inch)

	1700	2100	3200
A	480-1700 (18.9-66.9")	480-2100 (18.9-82.7")	480-3200 (18.9-126")
B	**320-1700 (12.6-66.9")		
C	150-1300 (5.9-51.2")	150-1300 (5.9-51.2")	150-1300 (5.9-51.2")
D	200-835 (7.9-32.9")	200-835 (7.9-32.9")	210-1580 (8.3-62.2")
**Small Box Folding Device Applied as Optional			



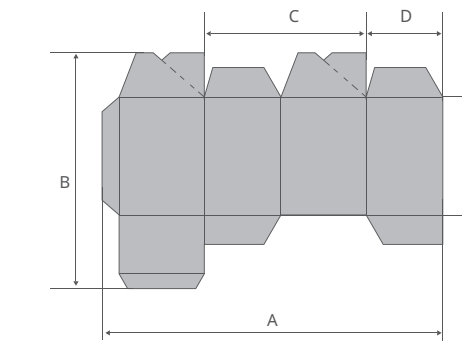
4 corner boxes without lid Unit: mm (inch)

	1700	2100	3200
A	300-1280 (11.8-50.4")	300-1800 (11.8-70.9")	300-2080 (11.8-81.9")
B	250-1200 (9.8-47.2")	250-1200 (9.8-47.2")	250-1300 (9.8-51.2")
C	40-180 (1.6-7.1")	40-180 (1.6-7.1")	40-180 (1.6-7.1")



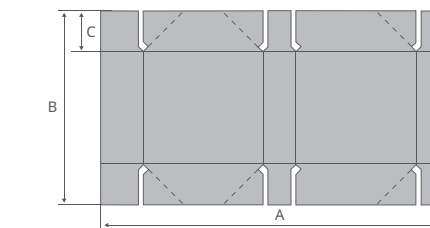
Double wall boxes Unit: mm (inch)

	1700	2100	3200
A	360-1280 (14.2-50.4")	360-1800 (14.2-70.9")	360-2080 (14.2-81.9")
B	250-1200 (9.8-47.2")	250-1200 (9.8-47.2")	250-1300 (9.8-51.2")
C	40-180 (1.6-7.1")	40-180 (1.6-7.1")	45-200 (1.8-7.9")
D	280-1100 (11.0-43.3")	280-1400 (11.0-55.1")	280-2080 (11.0-81.9")



Crash-lock bottom boxes Unit: mm (inch)

	1700	2100	3200
A	480-1700 (18.9-66.9")	480-2100 (18.9-82.7")	480-3100 (18.9-122.0")
B	150-1300 (5.9-51.2")	150-1300 (5.9-51.2")	150-1300 (5.9-51.2")
C	180 (7.1")	180 (7.1")	225 (8.9")
D	40 (1.6")	40 (1.6")	45 (1.8")
E	100 (3.9")	100 (3.9")	100 (3.9")



6 corner boxes Unit: mm (inch)

	1700	2100	3200
A	480-1650 (18.9-65.0")	480-2050 (18.9-80.7")	480-2150 (18.9-84.6")
B	250-1200 (9.8-47.2")	250-1200 (9.8-47.2")	250-1300 (9.8-51.2")
C	40-180 (1.6-7.1")	40-180 (1.6-7.1")	45-180 (1.8-7.1")

Automatic Folder Gluer  
for Corrugated Board

**EFOLD 1700/2100/3200 ELITE**

**Simply robust**





Automatic Folder Gluer  
for Corrugated Board

# E FOLD 1700/2100/3200 ELITE

Whether it is a straight-line box, a crash-lock bottom box, a 4/6 corner box or other boxes, you can precisely configure the ETERNA folder gluers according to your production demands.

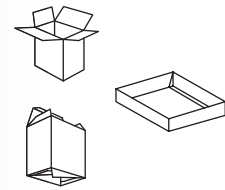


## FEATURES

- One tool adjustments throughout the machine, operator friendliness;
- Extra wide and strong upper and lower belts specially designed for corrugated boxes;
- Motorized carrier system for easy operation;
- Linear rail system at all carriers (upper/lower carriers) for easy and precise adjustments;
- Modular design for easy adaptation to accommodate various complex boxes such as crash-lock bottom boxes and 4/6 corner boxes;
- New HMI with icon design for easy communication;
- Strong and steady construction to improve running conditions;
- Alignment Section as standard equipment to ensure proper feeding.

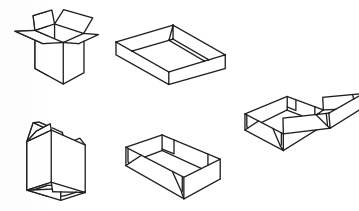
## Configuration

C3



C3 = Straight line boxes, double wall boxes and crash-lock bottom boxes

C6

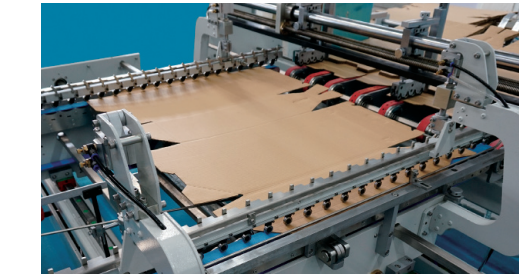


C6 = Straight line boxes, double wall boxes, crash-lock bottom boxes and 4/6 corner boxes.



### FEEDER SECTION

- Vacuum Feeding System;
- A/C motor with variable frequency speed control;
- Two motorized side guides for easy movement.



### SIDE-ALIGNMENT SECTION

- Two carrier alignment section allowing perfect registration of the blanks;
- Motorized carriers are laterally moved via push buttons;
- Upper carriers can be pneumatically lifted for different thickness of corrugated board.



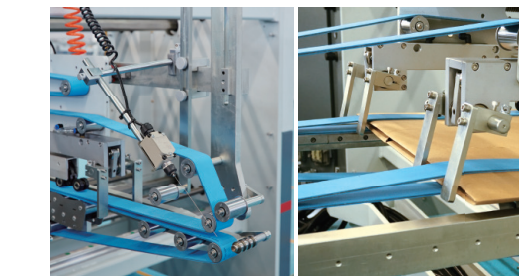
### NO.1 & NO.2 FOLDING SECTION

- Three carrier construction;
- To suit a wide range of regular and irregular boxes, dedicated 4 corner and 6 corner modules;
- Upper carriers can be pneumatically lifted for different thickness of corrugated board.



### GLUING SYSTEM

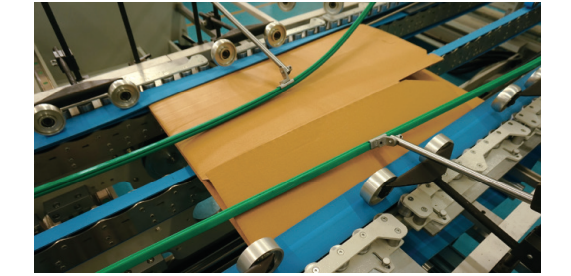
- Electronic extrusion gluing system (Optional) is required and its configurations depend on box layout to be processed..



### TROMBONE SECTION

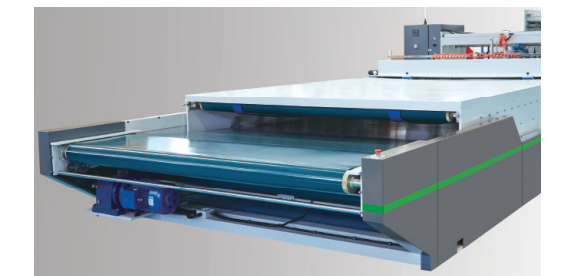
- Motorized telescopic upper and lower trombone arms to suit various box configurations;
- Jam detection system;
- Pneumatic front stoppers with sensor to eliminate fish tailing.

## E FOLD 1700/2100/3200 ELITE



### FINAL FOLD SECTION

- Left and Right hand folding belts are individually adjustable via A/C motor to perfectly align folding panels;
- Extended upper carrier to ensure smooth folding specially for wider boxes.



### CONVEYOR COMPRESSION SECTION

- Integrated box stream regulator ensuring precise and consistent box spacing;
- Rear stack corrector device to perfectly align and square RSC type boxes etc..
- Pneumatic compression system for perfect gluing performance.